

Template

John Smith

September 29, 2022

1 Introduction

This is a template. You can make references to things like (Lamport, 1986), which will show up in the bibliography (Section 4.)

2 Equations

Here is an inline equation: $F = ma$. Below is a block equation which we can label as Eq. (1).

$$a^2 + b^2 = c^2 \tag{1}$$

3 Figures and tables

Fig. 1 is an example figure.

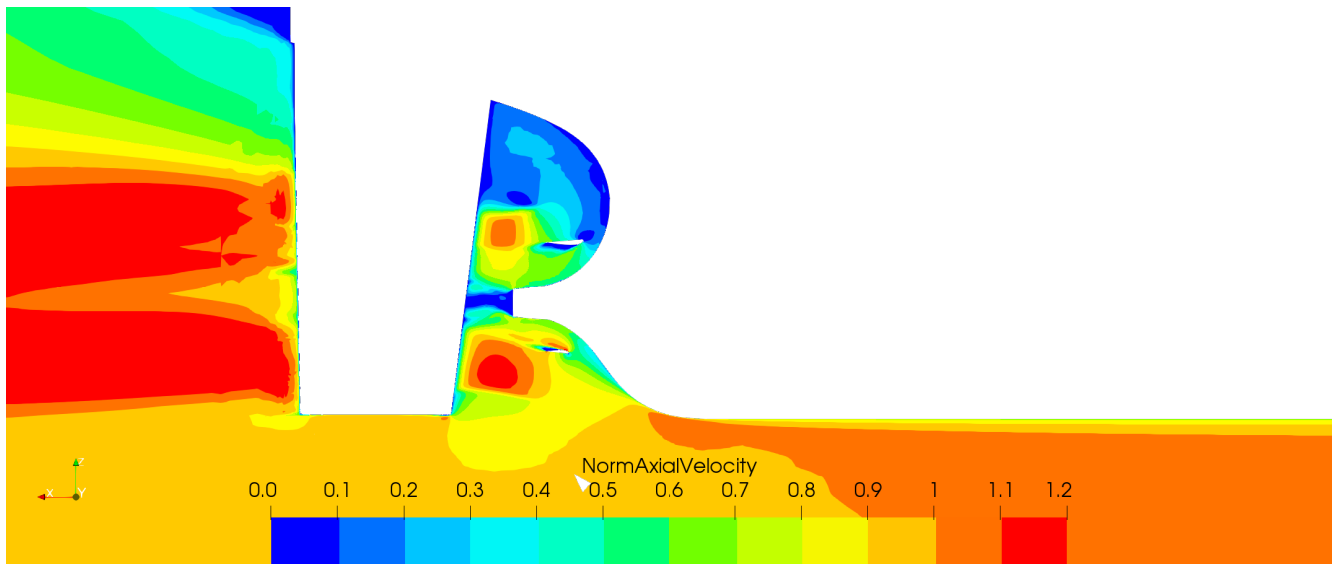


Figure 1: An example image.

Table 1 is an example table.

Table 1: An example table.

| Heading 1 | Heading 2 | Heading 3 |
|-----------|-----------|-----------|
| 1 | 2 | 3 |
| 4 | 5 | 6 |
| 7 | 8 | 9 |

4 Code

Below is some C++ code.

```
tmp<fvVectorMatrix> tUEqn
(
    fvm::div(phi, U)
    + MRF.DDt(U)
    + turbulence->divDevReff(U)
    ==
    fvOptions(U)
);
```

References

Lamport, L. (1986). *LATEX : a document preparation system*. Addison-Wesley Pub. Co.